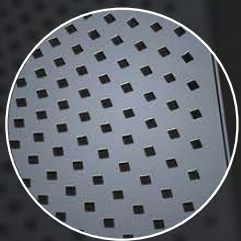


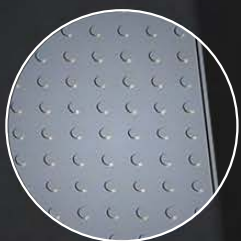
VENGO

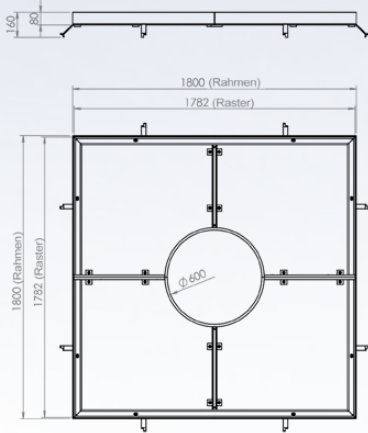


VINCENNES
RONDE



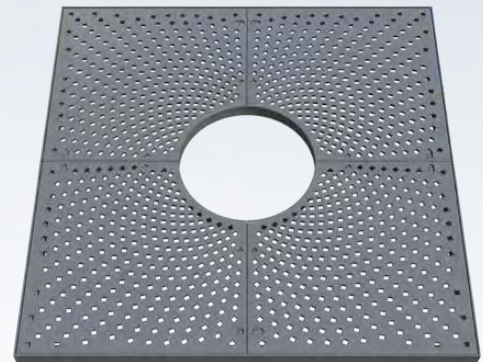
VINCENNES
CARREE





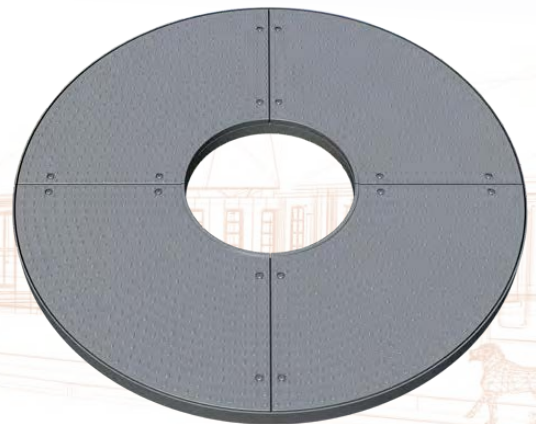
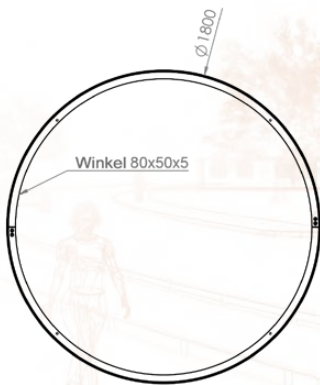
VENGO Baumgitter

600 - 1800.
Metallisierter, lackierter Guss
4 Elemente.
Design P. Gangnet
M. Corajoud



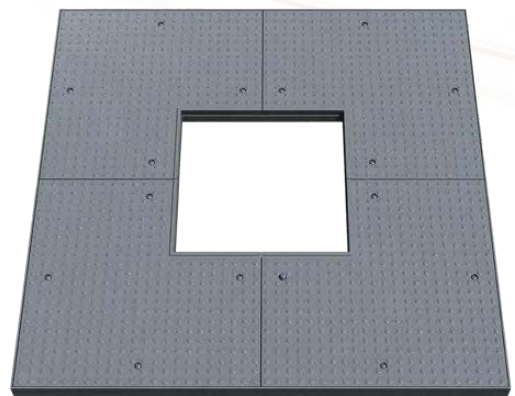
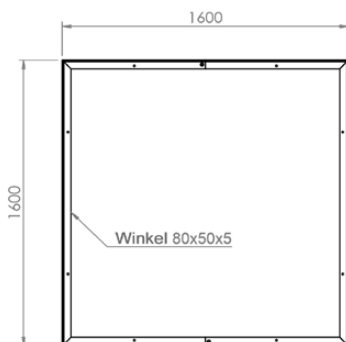
VINCENNES R Baumgitter

600 - 1800.
Metallisierter, lackierter Guss
4 Elemente.
Design P. Gangnet



VINCENNES C Baumgitter

600 - 1600.
Metallisierter, lackierter Guss
4 Elemente.
Design P. Gangnet





GHM Eclatec GmbH

LED Leuchten

Moderne Stadtmöbel

Abfalleimer

Licht Poller



BAUMGITTER

feststehende Poller

Klassische Gusseisen

Lichtsäulen

MODERNE GUSSEISEN

Trinkwasserbrunnen

Abwehripoller

LEITUNGSMASTEN

SITZGELEGENHEITEN

STRABENBAHN

Moderne LED-Leuchten

Zeitlose LED-Leuchten

Zeitlose Brunnen

Zeitlose Stadtmöbel

GHM Eclatec GmbH

Lebacher Straße 4 - 66113 Saarbrücken

Telefon Nr. 0781/9321800 - Telefax Nr. 0781/9321801

Email: info@ghm-eclatec.de - Seite: www.ghm-eclatec.de

Bankverbindung

Commerzbank Saarbrücken - Konto Nr. 530018100 - BLZ 590 400 00

IBAN DE79 5904 0000 0530 0181 00 - BIC COBADEFFXXX

HRB 102805 - Ust-IDNr. DE303737390